

# Philippines ■ Population 2014 99 million

## Estimates of TB burden<sup>a</sup> 2014

	NUMBER (thousands)	RATE (per 100 000 population)
Mortality (excludes HIV+TB)	10 (9–11)	10 (9.1–11)
Mortality (HIV+TB only)	0.08 (0.055–0.11)	0.08 (0.06–0.11)
Prevalence (includes HIV+TB)	410 (360–470)	417 (367–471)
Incidence (includes HIV+TB)	290 (250–320)	288 (254–324)
Incidence (HIV+TB only)	2.5 (2–3.2)	2.6 (2–3.2)
Case detection, all forms (%)	85 (76–97)	

## Estimates of MDR-TB burden<sup>a</sup> 2014

	NEW	RETREATMENT
% of TB cases with MDR-TB	2 (1.4–2.7)	21 (16–29)
MDR-TB cases among notified pulmonary TB cases	4 600 (3 300–6 300)	6 500 (4 700–8 700)

## TB case notifications 2014

	NEW <sup>c</sup>	RELAPSE
Pulmonary, bacteriologically confirmed	92 991	6 277
Pulmonary, clinically diagnosed	139 950	
Extrapulmonary	4 161	

## Total new and relapse

Total new and relapse	243 379
Previously treated, excluding relapses	24 057
<b>Total cases notified</b>	<b>267 436</b>

Among 97 578 new and relapse cases:

12 191 (12%) cases aged under 15 years; male:female ratio: 1.8

## Reported cases of RR-/MDR-TB 2014

	NEW	RETREATMENT	TOTAL <sup>b</sup>
Cases tested for RR-/MDR-TB	4 415 (5%)	20 196 (67%)	27 287
Laboratory-confirmed RR-/MDR-TB cases			3 000
Patients started on MDR-TB treatment <sup>c</sup>			2 680

## TB/HIV 2014

	NUMBER	(%)
TB patients with known HIV status	53 354	(20)
HIV-positive TB patients	108	(<1)
HIV-positive TB patients on co-trimoxazole preventive therapy (CPT)	20	(19)
HIV-positive TB patients on antiretroviral therapy (ART)	53	(49)
HIV-positive people screened for TB	5 995	
HIV-positive people provided with IPT		

## Treatment success rate and cohort size

	(%)	COHORT
New and relapse cases registered in 2013	(90)	216 250
Previously treated cases, excluding relapse, registered in 2013	(86)	2 924
HIV-positive TB cases, all types, registered in 2013		
RR-/MDR-TB cases started on second-line treatment in 2012	(43)	1 798
XDR-TB cases started on second-line treatment in 2012	(10)	10

## Laboratories 2014

Smear (per 100 000 population)	2.6
Culture (per 5 million population)	1.1
Drug susceptibility testing (per 5 million population)	0.2
Sites performing Xpert MTB/RIF	84
Is second-line drug susceptibility testing available?	Yes, in country

## Financing TB control 2015

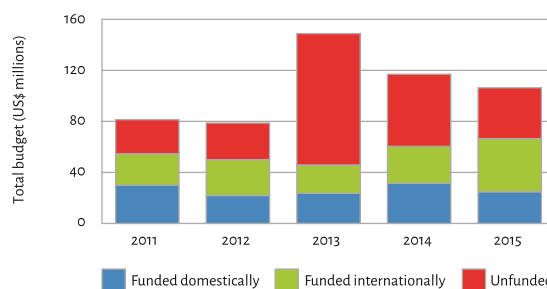
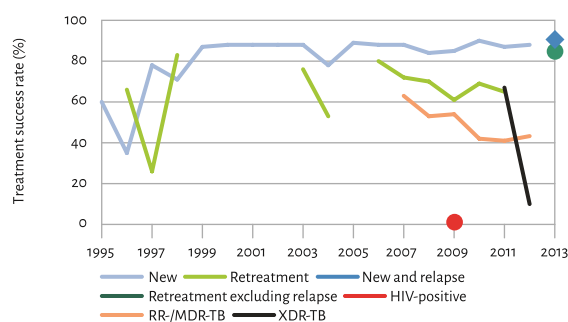
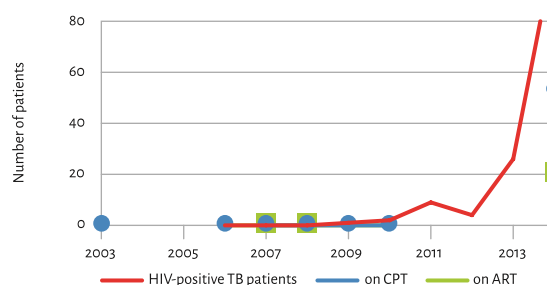
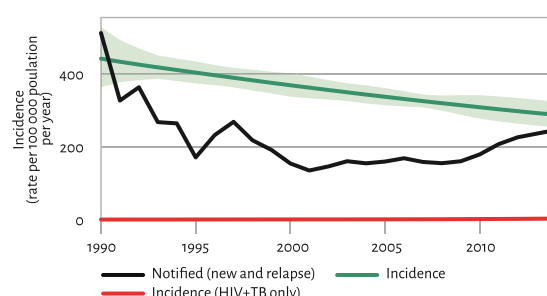
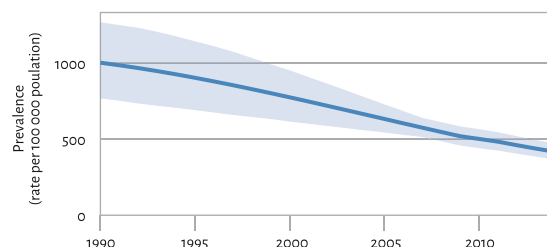
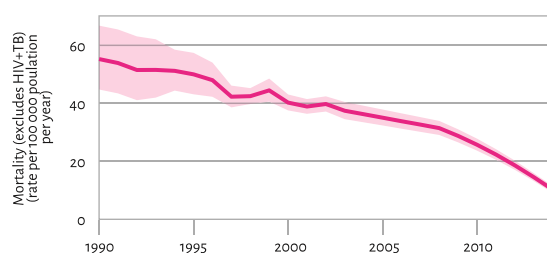
National TB programme budget (US\$ millions)	106
% Funded domestically	23%
% Funded internationally	39%
% Unfunded	37%

Data are as reported to WHO. Estimates of TB and MDR-TB burden are produced by WHO in consultation with countries.

<sup>a</sup> Ranges represent uncertainty intervals.

<sup>b</sup> Includes cases with unknown previous TB treatment history.

<sup>c</sup> Includes patients diagnosed before 2014 and patients who were not laboratory-confirmed as having RR-/MDR-TB.



## Estimates of TB burden<sup>a</sup> 2014

	NUMBER (thousands)	RATE (per 100 000 population)
Mortality (excludes HIV+TB)	8.9 (6.3–12)	58 (41–78)
Mortality (HIV+TB only)	0.82 (0.63–1)	5.3 (4.1–6.7)
Prevalence (includes HIV+TB)	100 (87–120)	668 (565–780)
Incidence (includes HIV+TB)	60 (54–66)	390 (353–428)
Incidence (HIV+TB only)	1.8 (1.6–2)	12 (10–13)
Case detection, all forms (%)	72 (66–80)	

## Estimates of MDR-TB burden<sup>a</sup> 2014

	NEW	RETREATMENT
% of TB cases with MDR-TB	1.4 (0.7–2.5)	11 (4–22)
MDR-TB cases among notified pulmonary TB cases	330 (160–590)	200 (73–400)

## TB case notifications 2014

	NEW <sup>b</sup>	RELAPSE
Pulmonary, bacteriologically confirmed	12 168	445
Pulmonary, clinically diagnosed	11 286	709
Extrapulmonary	18 310	141

**Total new and relapse** 43 059

Previously treated, excluding relapses 679

**Total cases notified** 43 738

Among 43 059 new and relapse cases:

12 050 (28%) cases aged under 15 years; male:female ratio: 1.2

## Reported cases of RR-/MDR-TB 2014

	NEW	RETREATMENT	TOTAL <sup>b</sup>
Cases tested for RR-/MDR-TB	646 (5%)	1 329 (67%)	1 975
Laboratory-confirmed RR-/MDR-TB cases			110
Patients started on MDR-TB treatment <sup>c</sup>			110

## TB/HIV 2014

	NUMBER	(%)
TB patients with known HIV status	35 635	(81)
HIV-positive TB patients	953	(3)
HIV-positive TB patients on co-trimoxazole preventive therapy (CPT)	938	(98)
HIV-positive TB patients on antiretroviral therapy (ART)	938	(98)
HIV-positive people screened for TB	3 504	
HIV-positive people provided with IPT	901	

## Treatment success rate and cohort size

	(%)	COHORT
New and relapse cases registered in 2013	(93)	35 536
Previously treated cases, excluding relapse, registered in 2013	(90)	1 701
HIV-positive TB cases, all types, registered in 2013		
RR-/MDR-TB cases started on second-line treatment in 2012	(79)	110
XDR-TB cases started on second-line treatment in 2012		

## Laboratories 2014

Smear (per 100 000 population)	1.4
Culture (per 5 million population)	1.3
Drug susceptibility testing (per 5 million population)	1.0
Sites performing Xpert MTB/RIF	17
Is second-line drug susceptibility testing available?	No

## Financing TB control 2015

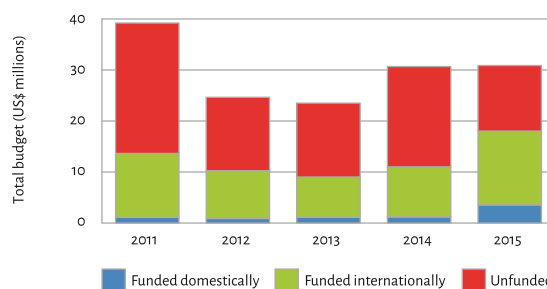
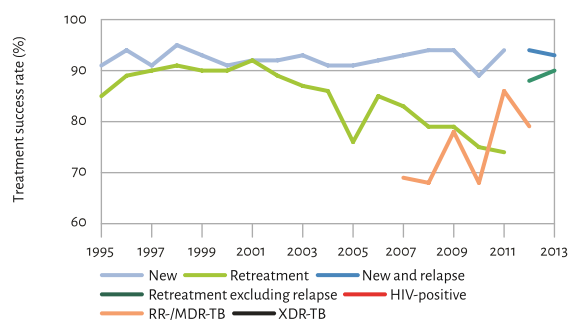
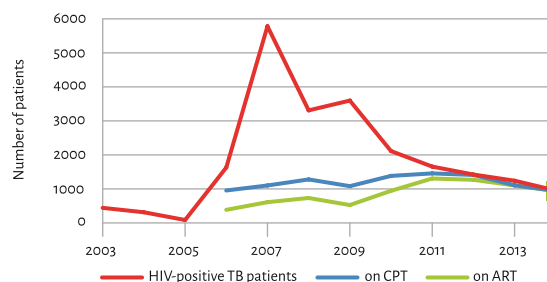
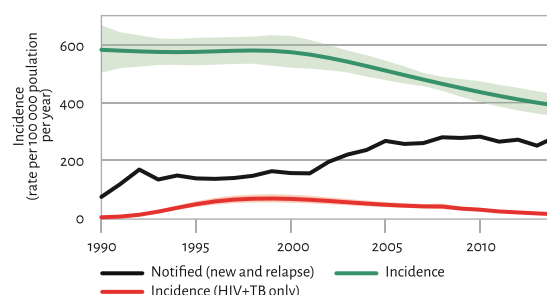
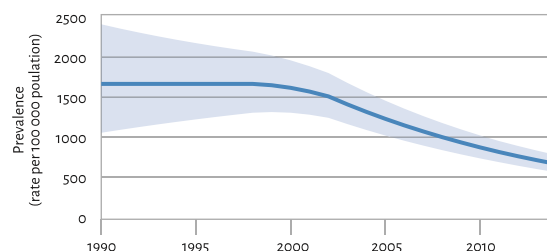
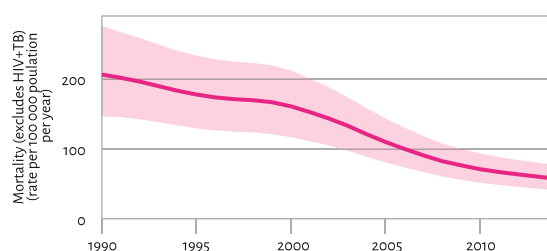
National TB programme budget (US\$ millions)	31
% Funded domestically	12%
% Funded internationally	47%
% Unfunded	42%

Data are as reported to WHO. Estimates of TB and MDR-TB burden are produced by WHO in consultation with countries.

<sup>a</sup> Ranges represent uncertainty intervals.

<sup>b</sup> Includes cases with unknown previous TB treatment history.

<sup>c</sup> Includes patients diagnosed before 2014 and patients who were not laboratory-confirmed as having RR-/MDR-TB.



## Estimates of TB burden<sup>a</sup> 2014

	NUMBER (thousands)	RATE (per 100 000 population)
Mortality (excludes HIV+TB)	100 (66–150)	41 (26–59)
Mortality (HIV+TB only)	22 (13–32)	8.5 (5.2–13)
Prevalence (includes HIV+TB) <sup>b</sup>	1 600 (1 300–2 000)	647 (513–797)
Incidence (includes HIV+TB)	1 000 (700–1 400)	399 (274–546)
Incidence (HIV+TB only)	63 (41–90)	25 (16–36)
Case detection, all forms (%)	32 (23–46)	

## Estimates of MDR-TB burden<sup>a</sup> 2014

	NEW	RETREATMENT
% of TB cases with MDR-TB	1.9 (1.4–2.5)	12 (8.1–17)
MDR-TB cases among notified pulmonary TB cases	5 600 (4 200–7 400)	1 100 (770–1 600)

## TB case notifications 2014

	NEW <sup>c</sup>	RELAPSE
Pulmonary, bacteriologically confirmed	193 321	6 449
Pulmonary, clinically diagnosed	101 991	1 391
Extrapulmonary	19 653	1

**Total new and relapse** **322 806**

Previously treated, excluding relapses 1 733

**Total cases notified** **324 539**

Among 322 806 new and relapse cases:  
23 170 (7%) cases aged under 15 years; male:female ratio: 1.4

## Reported cases of RR-/MDR-TB 2014

	NEW	RETREATMENT	TOTAL <sup>b</sup>
Cases tested for RR-/MDR-TB	1 058 (<1%)	8 445 (88%)	9 503
Laboratory-confirmed RR-/MDR-TB cases			1 812
Patients started on MDR-TB treatment <sup>d</sup>			1 284

## TB/HIV 2014

	NUMBER	(%)
TB patients with known HIV status	15 074	(5)
HIV-positive TB patients	2 355	(16)
HIV-positive TB patients on co-trimoxazole preventive therapy (CPT)	963	(41)
HIV-positive TB patients on antiretroviral therapy (ART)	624	(26)
HIV-positive people screened for TB		
HIV-positive people provided with IPT		

## Treatment success rate and cohort size

	(%)	COHORT
New and relapse cases registered in 2013	(88)	325 582
Previously treated cases, excluding relapse, registered in 2013	(64)	1 521
HIV-positive TB cases, all types, registered in 2013	(49)	2 438
RR-/MDR-TB cases started on second-line treatment in 2012	(54)	432
XDR-TB cases started on second-line treatment in 2012	(64)	11

## Laboratories 2014

Smear (per 100 000 population)	2.2
Culture (per 5 million population)	0.4
Drug susceptibility testing (per 5 million population)	0.3
Sites performing Xpert MTB/RIF	41
Is second-line drug susceptibility testing available?	Yes, in country

## Financing TB control 2015

National TB programme budget (US\$ millions)	133
% Funded domestically	13%
% Funded internationally	21%
% Unfunded	66%

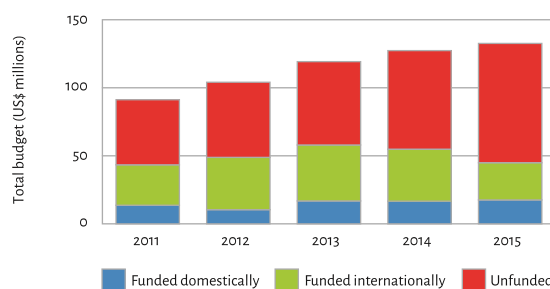
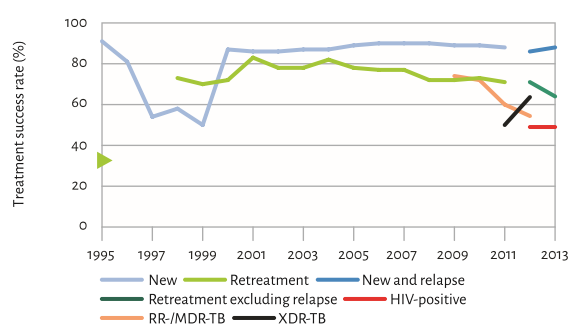
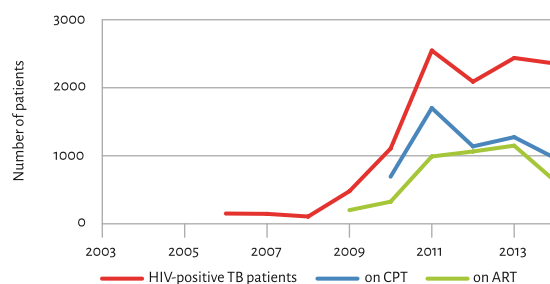
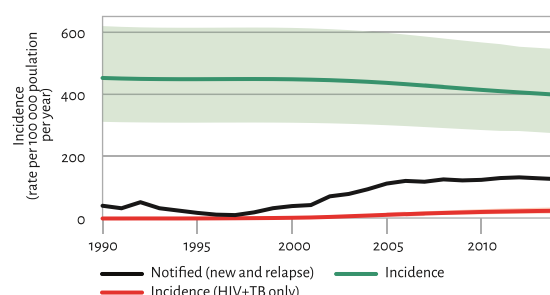
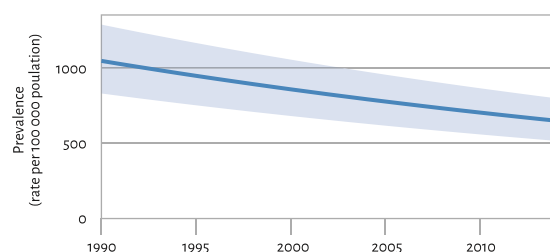
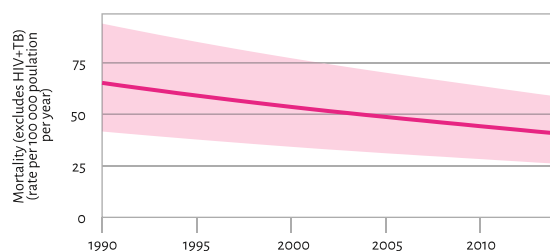
Data are as reported to WHO. Estimates of TB and MDR-TB burden are produced by WHO in consultation with countries.

<sup>a</sup> Ranges represent uncertainty intervals.

<sup>b</sup> The prevalence rate of bacteriologically confirmed TB was 531 (421–655) per 100 000 population; the prevalence rate of clinically diagnosed TB (i.e. smear-negative and culture-negative TB, including all extra-pulmonary cases) was 116 (91–143) per 100 000 population; the prevalence rate of extra-pulmonary TB (a subset of those in the clinically diagnosed category) was 58 (43–75) per 100 000 population.

<sup>c</sup> Includes cases with unknown previous TB treatment history.

<sup>d</sup> Includes patients diagnosed before 2014 and patients who were not laboratory-confirmed as having RR-/MDR-TB.



# Myanmar ■ Population 2014 53 million

## Estimates of TB burden<sup>a</sup> 2014

	NUMBER (thousands)	RATE (per 100 000 population)
Mortality (excludes HIV+TB)	28 (20–37)	53 (38–70)
Mortality (HIV+TB only)	4.1 (3.3–5.1)	7.7 (6.1–9.5)
Prevalence (includes HIV+TB)	240 (190–310)	457 (352–575)
Incidence (includes HIV+TB)	200 (180–220)	369 (334–406)
Incidence (HIV+TB only)	19 (15–24)	36 (28–44)
Case detection, all forms (%)	70 (64–78)	

## Estimates of MDR-TB burden<sup>a</sup> 2014

	NEW	RETREATMENT
% of TB cases with MDR-TB	5 (3.1–6.8)	27 (15–39)
MDR-TB cases among notified pulmonary TB cases	5 600 (3 500–7 700)	3 400 (1 900–4 900)

## TB case notifications 2014

	NEW <sup>b</sup>	RELAPSE
Pulmonary, bacteriologically confirmed	42 608	5 276
Pulmonary, clinically diagnosed	70 305	3 650
Extrapulmonary	16 108	405

<b>Total new and relapse</b>	<b>138 352</b>
Previously treated, excluding relapses	3 605
<b>Total cases notified</b>	<b>141 957</b>

Among 138 352 new and relapse cases:  
36 301 (26%) cases aged under 15 years; male:female ratio: 1.6

## Reported cases of RR-/MDR-TB 2014

	NEW	RETREATMENT	TOTAL <sup>b</sup>
Cases tested for RR-/MDR-TB	10 295 (24%)	15 166 (117%)	26 240
Laboratory-confirmed RR-/MDR-TB cases			3 495
Patients started on MDR-TB treatment <sup>c</sup>			1 537

## TB/HIV 2014

	NUMBER	(%)
TB patients with known HIV status	56 133	(40)
HIV-positive TB patients	6 412	(11)
HIV-positive TB patients on co-trimoxazole preventive therapy (CPT)	4 666	(73)
HIV-positive TB patients on antiretroviral therapy (ART)	5 749	(90)
HIV-positive people screened for TB	54 178	
HIV-positive people provided with IPT	2 997	

## Treatment success rate and cohort size

	(%)	COHORT
New cases registered in 2013	(87)	135 614
Previously treated cases registered in 2013	(71)	7 147
HIV-positive TB cases, all types, registered in 2013		
RR-/MDR-TB cases started on second-line treatment in 2012	(79)	443
XDR-TB cases started on second-line treatment in 2012		

## Laboratories 2014

Smear (per 100 000 population)	0.9
Culture (per 5 million population)	0.3
Drug susceptibility testing (per 5 million population)	0.2
Sites performing Xpert MTB/RIF	38
Is second-line drug susceptibility testing available?	Yes, outside country

## Financing TB control 2015

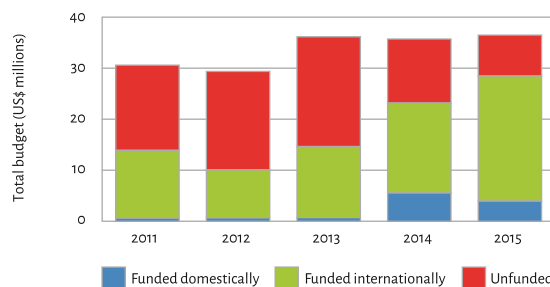
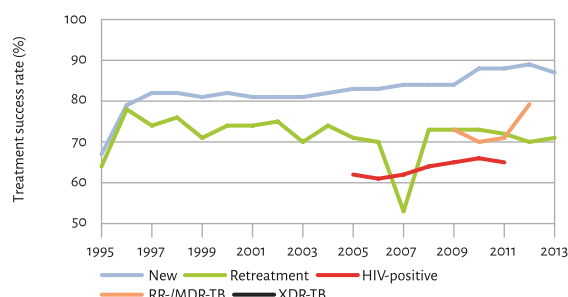
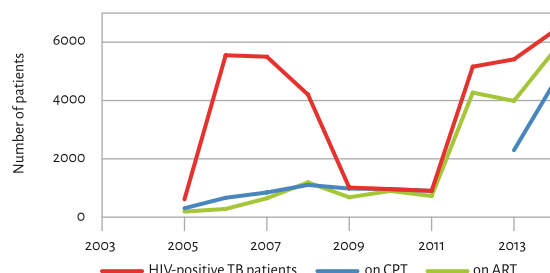
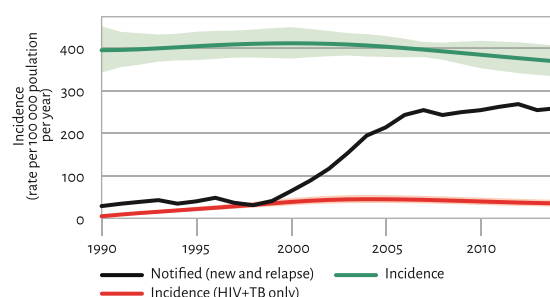
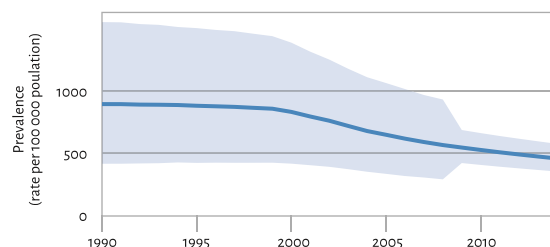
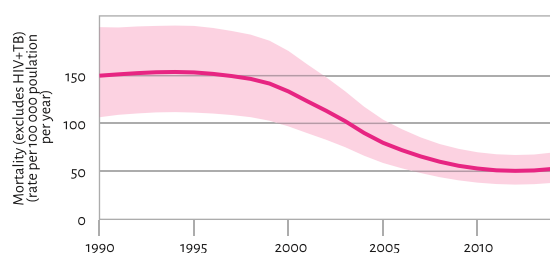
National TB programme budget (US\$ millions)	36
% Funded domestically	11%
% Funded internationally	67%
% Unfunded	22%

Data are as reported to WHO. Estimates of TB and MDR-TB burden are produced by WHO in consultation with countries.

<sup>a</sup> Ranges represent uncertainty intervals.

<sup>b</sup> Includes cases with unknown previous TB treatment history.

<sup>c</sup> Includes patients diagnosed before 2014 and patients who were not laboratory-confirmed as having RR-/MDR-TB.



# Thailand ■ Population 2014 68 million

## Estimates of TB burden<sup>a</sup> 2014

	NUMBER (thousands)	RATE (per 100 000 population)
Mortality (excludes HIV+TB)	7.4 (3.9–12)	11 (5.7–18)
Mortality (HIV+TB only)	4.5 (2.3–7.4)	6.6 (3.4–11)
Prevalence (includes HIV+TB)	160 (110–220)	236 (161–326)
Incidence (includes HIV+TB)	120 (61–190)	171 (90–276)
Incidence (HIV+TB only)	15 (7.8–24)	22 (12–36)
Case detection, all forms (%)	59 (36–110)	

## Estimates of MDR-TB burden<sup>a</sup> 2014

	NEW	RETREATMENT
% of TB cases with MDR-TB	2 (1.4–2.8)	19 (14–25)
MDR-TB cases among notified pulmonary TB cases	1 100 (780–1 600)	1 100 (800–1 500)

## TB case notifications 2014

	NEW <sup>b</sup>	RELAPSE
Pulmonary, bacteriologically confirmed	34 394	1 969
Pulmonary, clinically diagnosed	21 115	0
Extrapulmonary	10 244	0

<b>Total new and relapse</b>	<b>67 722</b>
Previously treated, excluding relapses	3 896
<b>Total cases notified</b>	<b>71 618</b>

Among 34 394 new cases:

119 (<1%) cases aged under 15 years; male:female ratio: 2.5

## Reported cases of RR-/MDR-TB 2014

	NEW	RETREATMENT	TOTAL <sup>b</sup>
Cases tested for RR-/MDR-TB	4 370 (13%)	2 209 (38%)	9 580
Laboratory-confirmed RR-/MDR-TB cases			506
Patients started on MDR-TB treatment <sup>c</sup>			

## TB/HIV 2014

	NUMBER	(%)
TB patients with known HIV status	50 670	(71)
HIV-positive TB patients	6 831	(13)
HIV-positive TB patients on co-trimoxazole preventive therapy (CPT)	4 359	(64)
HIV-positive TB patients on antiretroviral therapy (ART)	4 691	(69)
HIV-positive people screened for TB		
HIV-positive people provided with IPT		

## Treatment success rate and cohort size

	(%)	COHORT
New and relapse cases registered in 2013	(81)	65 867
Previously treated cases, excluding relapse, registered in 2013	(66)	1 812
HIV-positive TB cases, all types, registered in 2013	(67)	7 665
RR-/MDR-TB cases started on second-line treatment in 2012		
XDR-TB cases started on second-line treatment in 2012		

## Laboratories 2014

Smear (per 100 000 population)	1.3
Culture (per 5 million population)	3.9
Drug susceptibility testing (per 5 million population)	1.5
Sites performing Xpert MTB/RIF	14
Is second-line drug susceptibility testing available?	Yes, in country

## Financing TB control 2015

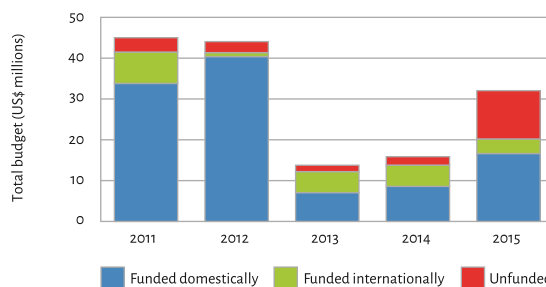
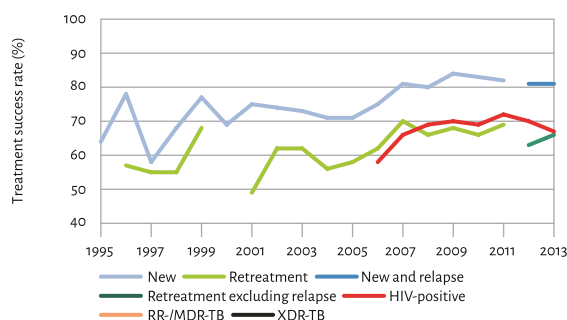
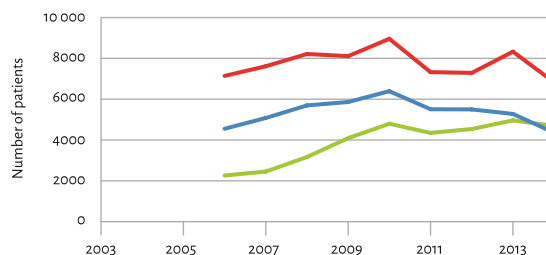
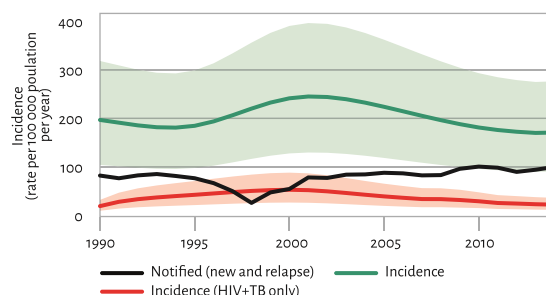
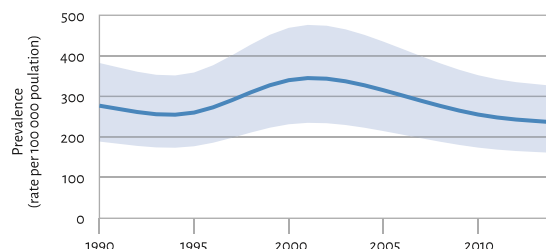
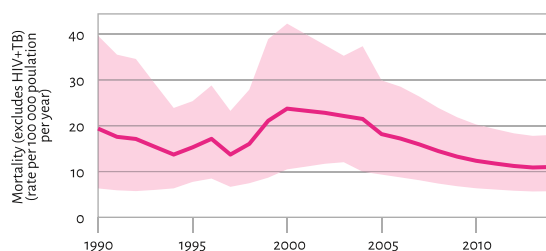
National TB programme budget (US\$ millions)	32
% Funded domestically	52%
% Funded internationally	11%
% Unfunded	37%

Data are as reported to WHO. Estimates of TB and MDR-TB burden are produced by WHO in consultation with countries.

<sup>a</sup> Ranges represent uncertainty intervals.

<sup>b</sup> Includes cases with unknown previous TB treatment history.

<sup>c</sup> Includes patients diagnosed before 2014 and patients who were not laboratory-confirmed as having RR-/MDR-TB.



## TB Statistics of Non-High Burden Countries (2014)

			Nepal		Korea		Taiwan		Japan	
Population (1000)			28		50				127	
Incidence (Estimate)	include. HIV	Number	44	39 - 50	43	41 - 46			23	20 - 26
		Rate	158	139-178	86	81-91			18	16 - 21
	HIV+ only	Number	1.5	1.2 - 1.9	0.51	0.44 - 0.59			0.099	0.089 - 0.12
		Rate	5.4	4.2 - 6.7	2.6	2.2 - 3.0			<0.1	<0.1-<0.1
Mortality		Number	5.3	3.7 - 7.1	1.9	1.8 - 2.1	609		2.2	2.2 - 2.3
		Rate			3.8	3.6 - 4.1	2.6		1.8	1.7 - 1.8
Case detection Rate (%)			19		93	88 - 99			84	75 - 96
MDT-TB (%)					2.7	2.1 - 3.4	3.2		0.7	0.42 - 1.1
Case notification		New & Relapse	35,277		40,190		11,326		19,615	
		Rate	125		80		48		15	
		New, Pulm, bacteriol confirmed	15,947		18,784				12,120	
		New, Pulm Clinical	8,445		9,350				2,061	
		New, Extrapulmonary	8,583		6,987				4,255	
Treatment success (2013 Cohort)		%	91		82		65		54	
		Cohort size	33,877		40,794				15,941	

Note : For Taiwan the data are for 2014 for notification, 2013 for mortality, and 2012 for Treatment results.

For Nepal, Korea and Japan figures are based on Global Tuberculosis Report 2015 (WHO).